

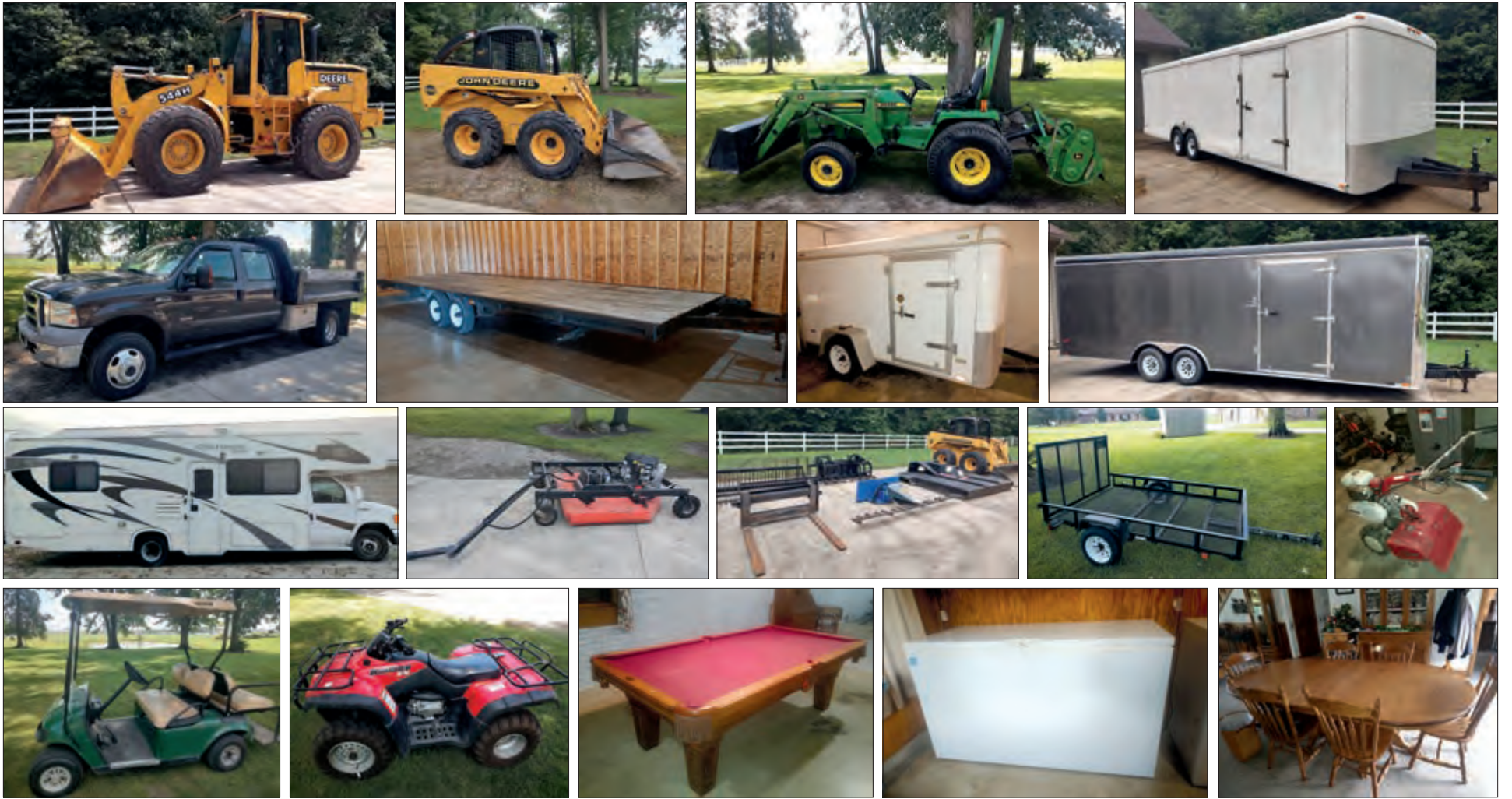
PUBLIC AUCTION of

Auction to be held at
1095 N 925 W
Shpshewana, IN 46565

WHEEL LOADER • SKID LOADER • TRACTOR • DUMP TRUCK • TRAILERS
CAMPER • 4 WHEELER • GOLF CART • SCAFFOLDING • LAWN & GARDEN
SHOP TOOLS • FURNITURE • GRILLS • BIKES • SPORTING GOODS
ANTIQUES • P.A. EQUIPMENT • SILVER • SPORTS CARDS

Located 1¼ miles west of the US 20 & SR 5 junction on US 20 to CR 925 W, then north to the auction site. Watch for "Auction Today" signs. Plenty of off road parking.

Saturday, September 7, 2024 • Auction starts at 9:30 A.M.



WHEEL LOADER SKID LOADER • TRACTOR DUMP TRUCK • TRAILERS

John Deere 544H wheel loader w/3,425 hrs.; John Deere 260 skid Loader w/950 hrs. & 77" landscape bucket; *The following skid loader attachments sell separately:* Worksite Pro RC78 brush hog; Worksite Pro 48" forks; 104" ESM double sickle mower; Land Pride 78" rock bucket; 72" double grapple brush bucket; John Deere 955 utility/lawn tractor w/front wheel assist, 70A loader, 72" belly mower, 60" brush hog, 60" snowblower; 550A 50" tiller; 84" Frontier landscape rake; 2005 Ford F350 XLT Super Duty landscape crew cab w/9' landscape dump bed (3 way dump) 56,200 miles; 28' enclosed cargo trailer w/ramp door; 24' enclosed cargo trailer w/ramp door; 5' x 10' enclosed cargo trailer; 8' x 27' flat bed trailer; 8' x 26' flat bed trailer; 5' x 8' utility trailer w/ ramp & mesh floor; Reese 16K 5th wheel hitch; various ball hitches; (8) ratchet strap sets for tying down vehicles' wheels to trailer;

CAMPER

2008 Four Winds model 29BG Chateau Citation 29' class C motorhome w/140,725 miles, built on a Ford E450 chassis

4-WHEELER • GOLF CART • SCAFFOLDING LAWN & GARDEN • SHOP TOOLS

Honda Rancher ES 4-wheeler w/electronic shift; 36v EZ Go golf cart; (16) 5'x5' Granite scaffolding w/bars; scaffolding wheels; 3300 PSI pressure washer; DR Pro Max 52" brush mower w/gas engine; 20" Honda rear-tine tiller; 40 gal. Country Line pull-behind sprayer; AgriFab 52" lawn sweeper; DR lawn edger; 48" lg. capacity lawn roller; 10" Delta table saw; CS 450P Echo chain saw; trash pump & hose; forklift safety cage; (2) sets of patio tables, chairs & umbrella; trampoline; porch swing; garden seeder; 28' wooden ext. ladder; 16' aluminum ext. ladder; 6' fiberglass step ladder; (8) plastic chicken crates; car ramps; aluminum folding ramps; ratchet straps; livestock tank; 3T floor jack; 2½T trolley jack; ladder jacks; chest-on-chest tool chest; 150,000 btu Reddy heater; cases of Senco ¾", 1" & 1½" pin nails; gas cans; 2-wheeled hand carts; furniture blankets; furniture carts; bolts; nuts; brick carriers; forks; rakes; shovels; post hole digger; adz; & lots more;

FURNITURE & HOUSEHOLD ITEMS

(4) 5 pc. oak bedroom sets; oak 48 x 72 double pedestal harvest table w/12 leaves; (2) captains chairs & 6 side chairs; oak bookcase highboy desk; oak grandfather's clock built by Joni Hochstetler; oak rocker; slate top pool table with

sticks, rack & pool balls; (2) oak entertainment cabinets; oak deacon's bench; oak bookcase; oak 3-drawer filing cabinet; oak tea cart; oak hall table; hall trees; cedar chest; 3 pc. living room set w/5 recliners; (4) 8' Amish-style folding church benches; (3) swivel office chairs; wood box; gun safe; small safe; (10) 6" & 8" folding banquet tables; approx. (10) artificial Ficus trees; Sears Kenmore refrigerator; lamps; heaters; (8) chafing dishes; some depression; Fire King; bowls; dish pans; utensils; various glassware; punch bowl sets; Nintendo games in the box; noodle cutter; pressure cookers; Victoria food strainer; dinnerware; bakeware; crockpot; LP 2-burner; towels; blankets; quilts; queen bed sheets;

GRILLS • BIKES • SPORTING GOODS

(3) commercial grade gas grills on stands (pancake grills); rectangular grill pit w/ (3) Graber grills; fire ring; fish cooker; 4-burner Blackstone flat top gas grill; LP tanks; 30 amp RV extension cords & adapters; various bikes; (3) red Coleman lanterns; (2) Coleman camp stoves; NIB Endura Minn Kota 40 lb. thrust w/36" shaft trolling motor; fishing rod & reels;

ANTIQUE & COLLECTIBLE ITEMS

J C Higgins bike; box of 2½" square furniture nails; wood stove; pie safe; hutch; large copper kettle; 2 & 5 gallon Stinger crocks; pitcher pump; mechanical bank; sickle sharpener; Aladdin lamp; (2) New York Central Lines RR plates; sled; buggy jacks; milk bottles; (6) old metal lunch boxes; sports cards; (2) Elgin pocket watches; jewelry;

P. A. EQUIPMENT

Mackie CR1604 VLZ 16-channel mixer board w/equalizer & amps, (4) EV SX100 speakers, stands & cables; (2) Yamaha SN121V speakers & stands; Multivox Premier 4-channel mixer/amp board with 2 speakers & stands; Mic stands; mics; cords; Mega Vox Pro PA system w/cordless mic;

SILVER • SPORTS CARDS • SHARK TEETH

(100) 2013 Australian .999 Silver Koala \$1 coins; some foreign money; some sports cards; shark teeth;

**Elvie J. &
 Clara A. Frey,**
 Owners



ELVIE J. FREY, SR.
 #AU10142445
 Cell 260-463-1396

Auction Conducted By:
LEWIS & LAMBRIGHT, INC. #AC30200031
 260-463-2013 • Website: lewisandlambright.com

AL DELAGRANGE
 #AU10148378

WILLIS YODER
 #AU19500086

LAMAR BONTRAGER
 #AU11100084

STEVE CHUPP
 #AU10600046



Auctioneer's Note: Lot more than listed. For more photos of this auction, see auction posting on www.auctionzip.com. Not Responsible for Accidents. Announcements made at the auction takes precedence over printed matter.

Terms: Cash, Good Check or Credit Card with 5% fee. Wire transfer for funds over \$2,500 unless approved by auction company.

